

TOTALCHE 

INNOVATIVE LOGISTICS ECOSYSTEM



TOTALCHE

is a set of highly efficient technologies, devices and software that, being combined into a single ecosystem, can significantly increase the efficiency of logistics in 3 key areas:

- Quality (Accuracy / Timeliness / Integrity)
- Cost (Expenses)
- Trust (Reputation)

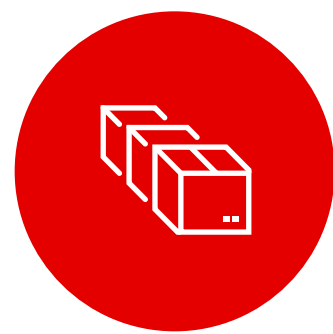
CHALLENGES AND VALUE

CHALLENGE:

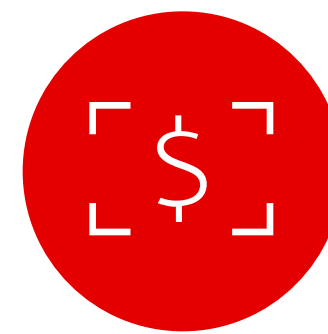
The key barrier in the relationship between the Warehouse Operator (Consignor) and its Client (Consignee) is **the lack of objective control of the process of picking (consolidation), packing and dispatching of packages (parcels, pallets, roll cages etc.)**

This, in turn, leads to additional costs for control and verification, does not allow to quickly and unambiguously determine the reason for the discrepancy in the Order (plan vs actual) and reduces the level of trust in the Consignor-Consignee system

ELIMINATION OF THIS BARRIER WILL PROVIDE:



- Objective control of the phases Picking (consolidation) / Final control / Packing



- Cost reduction for The Operator and the Client by reducing costs on the phases Picking control / Acceptance (check) by Consignee



- Quick and unambiguous solution for the phases Consideration / Investigation / Resolution of claims

ORDER FLOW USING TOTALCHEQ

Acceptance of
Order for items
picking

Checking SKU
parameters and
formation of Task
for picking

Picking
(consolidation) of
commodity units
into packages

Final control and
packing of
packages

Dispatch and
handover of
packages by their
quantity and
integrity to
Consignee

Acceptance of
packages by
Consignee by
assortment and
quality

Checking possible
discrepancies
using
TOTALCHEQ
SOFT CONTROL

SOLUTION

TOTALCHE

creates opportunity for transition to 100% unconditional acceptance in the Consignor-Consignee system, digitalizes the process of picking, packing and dispatching of Orders, as well as the process of consideration, investigation and resolution of claims on them



helps to reduce costs and cut operational expenses for picking, consolidation and control of Orders along with decreasing expenses for Consignee acceptance

significantly increases the accuracy of picking

removes contradictions in the Consignor-Consignee relationship system when inconsistencies are detected and complaints arise

provides a tool / technology for remote control of picking, packing and dispatching process of Orders (on-line and off-line)

HOW IT WORKS



Receiving information

receipt of goods at the warehouse and orders for shipment to the warehouse Operator's system

Checks the availability of all necessary data for the entire process execution (barcode, weight, dimensions)



Processing information in the system

creation of tasks for acceptance (TA) and picking (TP) in the Operator's WMS

If no WMS - analyzes, consults, proposes, installs and maintains a warehouse management system that meets the needs and ambitions of the Customer



Execution of TA and TP in the warehouse

by SKU (piece, box, pallet)

Performs initial (complete) and incoming weight and dimensional SKU control (total or selective). Convoys picking with video recording of the entire process fixing all scan actions



Control and consolidation of the TP

TOTALCHE 

Performs weight and dimensional control with video recording of the entire process



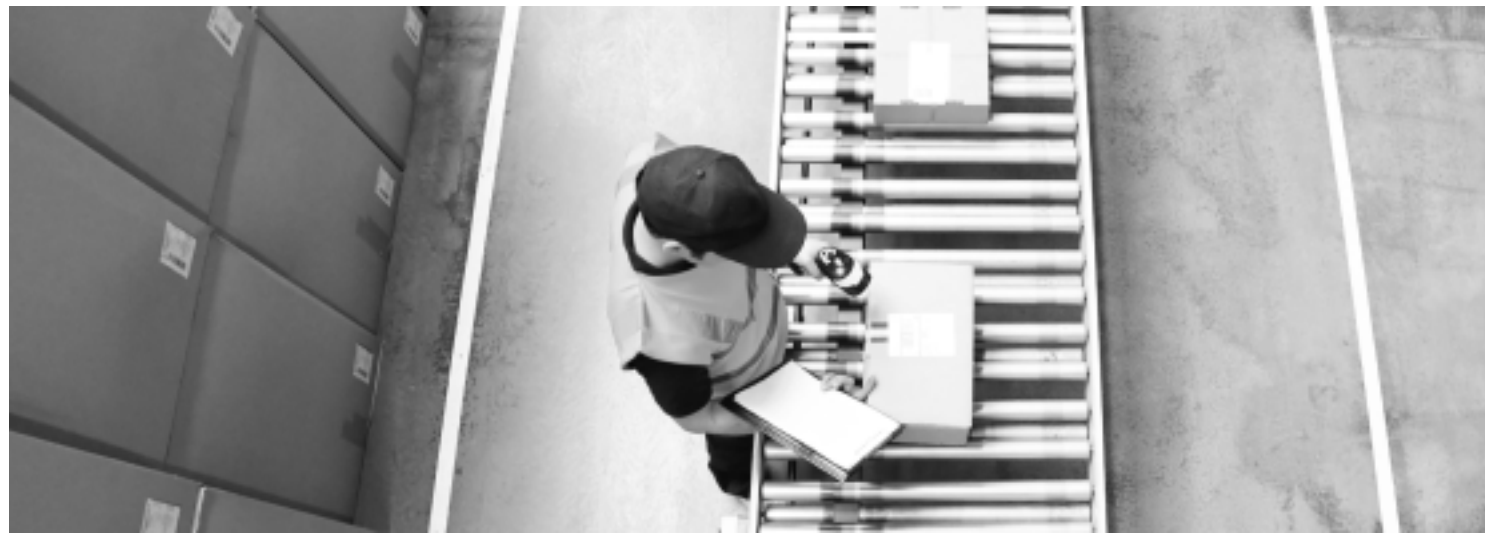
Final packing

Provides video registration of Order packing into packages/cargo places (CP)



Moving to the shipment area Dispatch / Delivery

Records the process of internal movement and dispatch of all packed and sealed CPs



Processing eventual claims

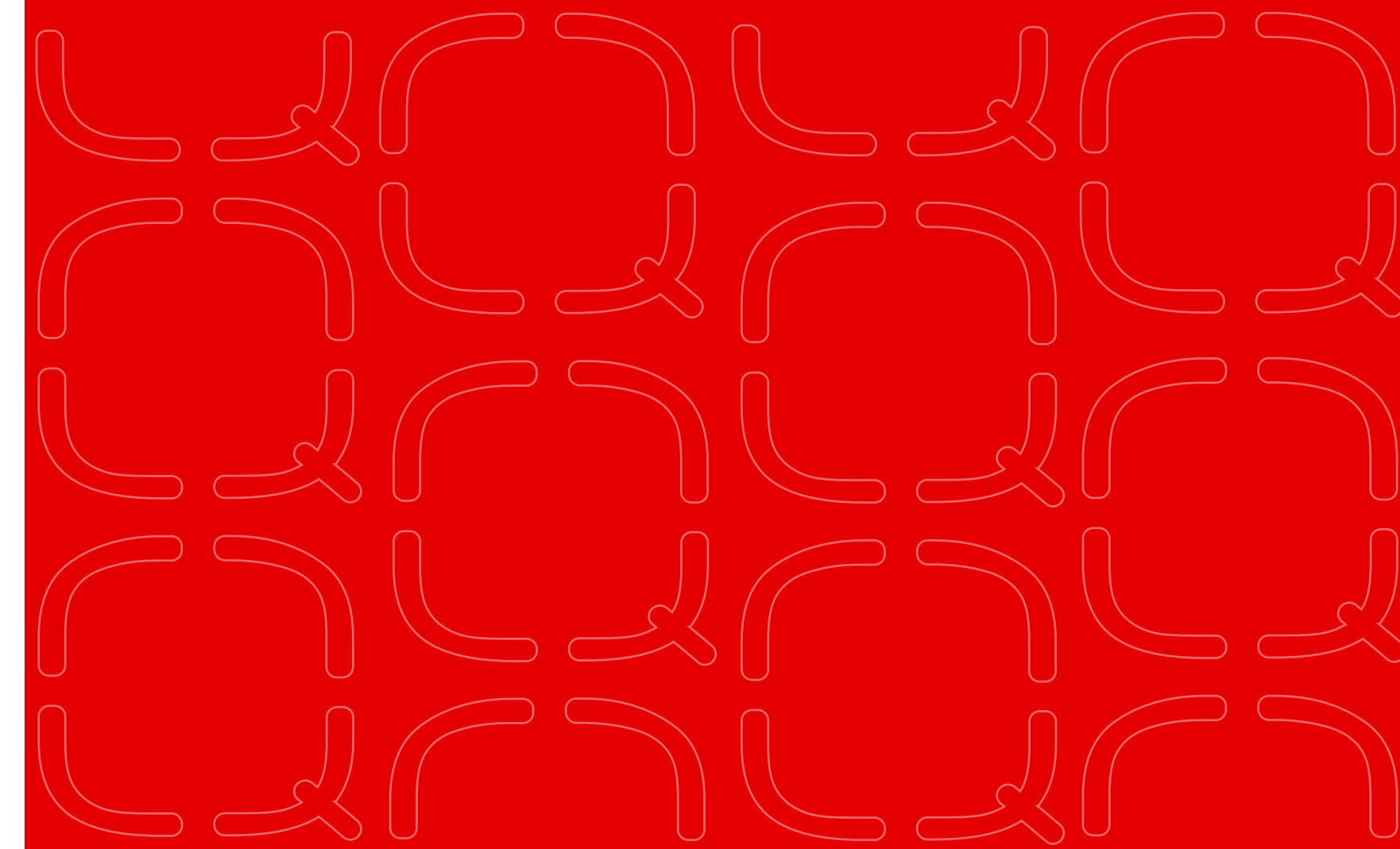
upon acceptance by the client (or even before that), in case of discrepancies / inconsistencies



Thus, TOTALCHEQ takes the physical part of the Order Flow to a new level of accuracy, speed and transparency, eliminating bottlenecks and ensuring ultimate quality, reducing costs and increasing trust between the Warehouse Operator and Customers

TOTALCHEQ

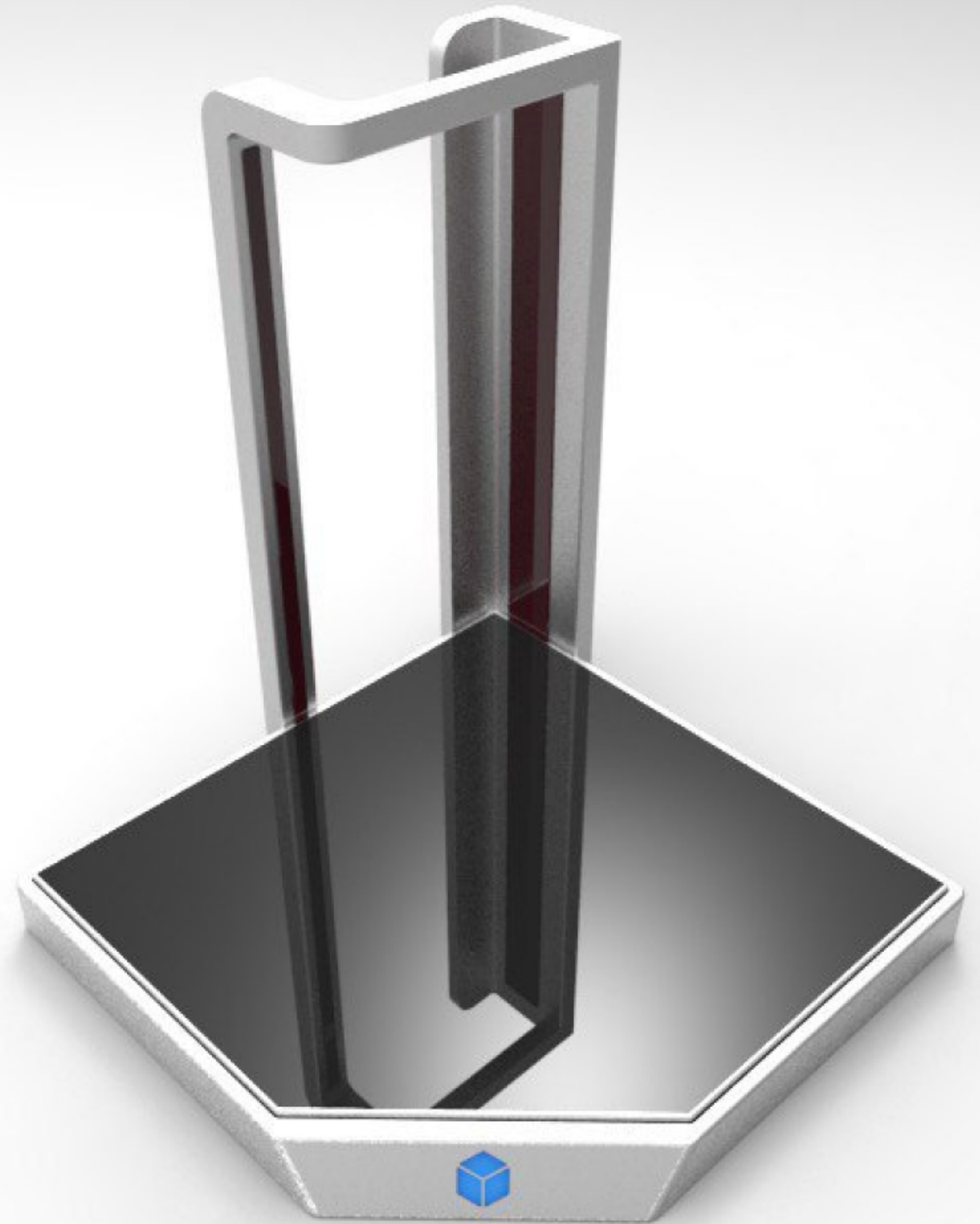
Provides opportunity to check the entire process (or a selected part) of picking, consolidation, control, packing and dispatch for individual orders, TPs, SKUs. At that, simultaneously to both the Operator and its Clients through the TOTALCHEQ SOFT CONTROL software/application

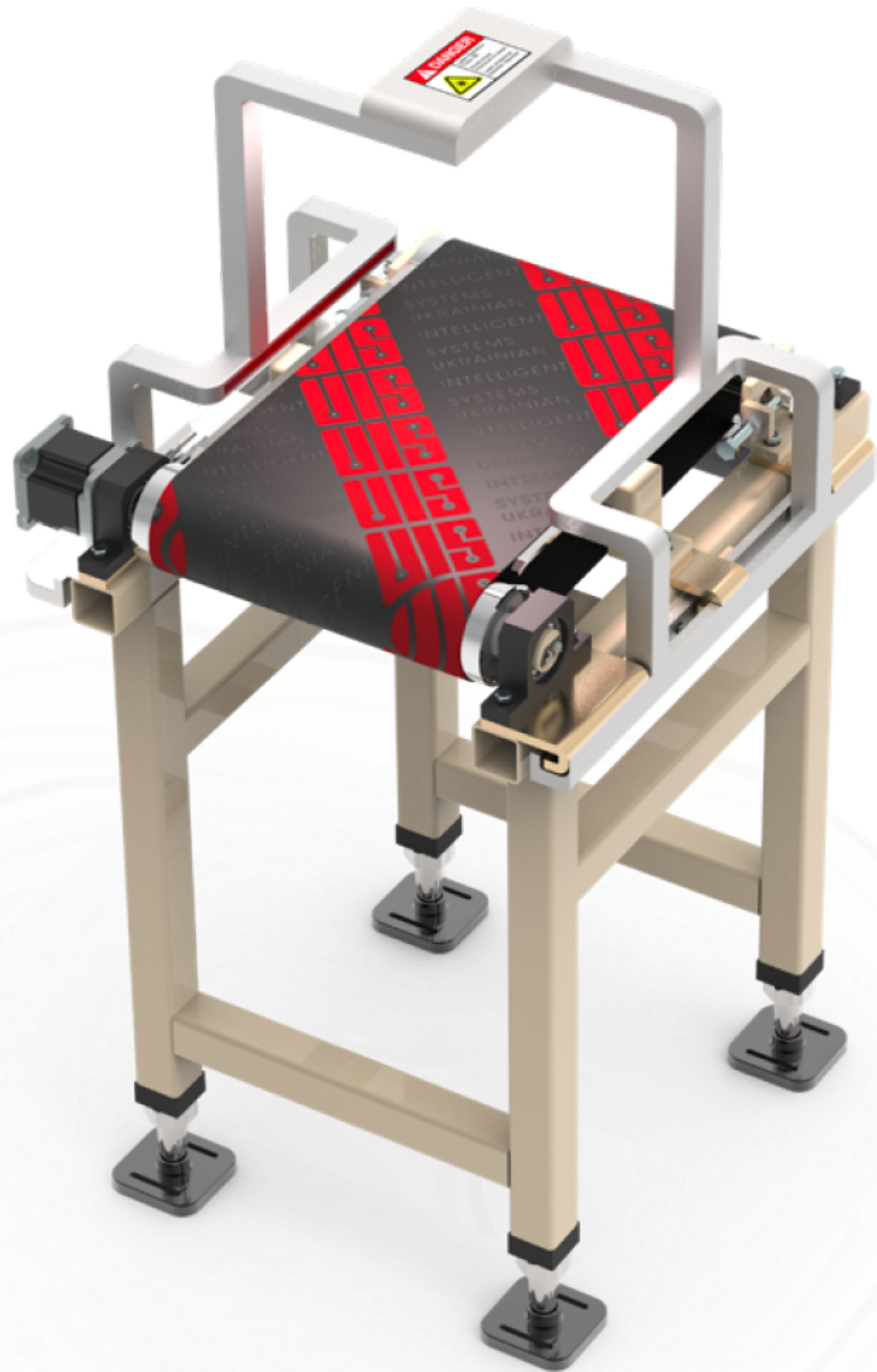


ECOSYSTEM ELEMENTS

MULTISCAN

- Auto-fixation of weight and dimensions
- Fast and accurate measurement of dimensions and weight of items
- Determination of the actual volume or cubic capacity
- Integration with any software
- Simultaneous determination of dimensions and weighing of items
- Sensor technology safe for staff and cargo
- Video registration of the entire measurement process
- Convenient ergonomic design
- Quick and easy launch anywhere via wi-fi connection





MULTISCAN WITH CONVEYOR BELT

- Automatic weight and size fixation
- Fast and accurate measurement of the dimensions and weight of items
- Determination of the actual volume or cubic capacity
- Integration with any software
- Measurement of items in any direction
- Simultaneous sizing and weighing of items
- Sensor technology safe for staff and cargo

ULTRA-PRECISE MOBILE SCALES WITH VIDEO CONTROL

- Weight measurement in the range from 0.01 to 50 kg
- Maximum deviation within 0.02%
- Video recording of the entire weighing process
- Integration with any software, including TOTALCHEQ SOFT CONTROL
- Convenient ergonomic design
- Quick and easy launch anywhere via wi-fi connection





FIXED WEIGHING PLATFORM WITH VIDEO CONTROL

- Weight measurement in the range from 50 to 1000 kg
- Maximum deviation within 0.02%
- Video recording of the entire weighing and packing process
- Integration with any software, including TOTALCHEQ SOFT CONTROL
- Integrated autonomous power supply system
- Equipped with monitors, label printers, barcode scanners
- Wi-Fi data transmission

HYDRAULIC PALLET TRUCK WITH INTEGRATED VIDEO REGISTRATION AND WEIGHING SYSTEM

- Dynamic weight measurement in the range from 0.5 to 1000 kg
- Maximum deviation within 0.02%
- Video recording of the entire picking and packing process
- Integration with any software, including TOTALCHEQ SOFT CONTROL
- Integrated autonomous power supply system
- Equipped with monitor, barcode scanner or TDC (optional)
- Wi-Fi data transmission





MOBILE DVR

- quick installation on any warehouse equipment
- MULTICLIQ system - quick and easy fixation to a roll cage and trolley
- video recording of the entire picking and packing process
- integration with any software, including TOTALCHEQ SOFT CONTROL
- integrated autonomous power supply system
- wi-fi data transfer

SUMMING UP



IMPLEMENTATION OF TOTALCHE

SIMULTANEOUSLY PROVIDES:

— **Highest quality** of key operations (picking, consolidation, control, packing and dispatch) due to the use of combined multi-format control of the entire process: scanning, weighing and video registration

— **Cost reduction** by optimizing the number of staff and temporary personnel involved in all stages of order execution, reduction of stock-taking losses, as well as an **increase in income** under contracts with SLA

— **Increase in customers' trust** as a result of sustainable high level of quality and the possibility of independent control of the operational process at any time

DEMO VIDEO

A picture is worth a thousand words.

Watch the real case video to make it sure

TOTALCHE 



[Click here](#)

TOTALCHEQ 

[TOTALCHEQ.COM](https://totalcheq.com)

Alexander Pitenko, CEO

ceo@totalcheq.com

+380 (66) 555 53 55